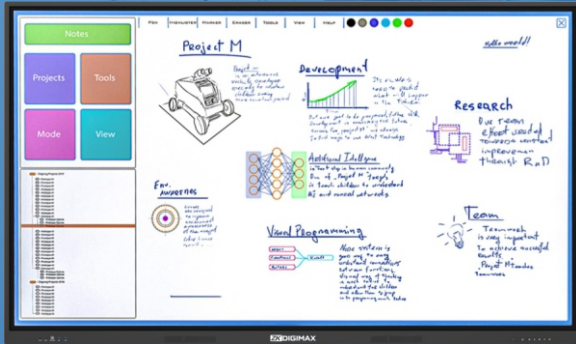


ZKD-IWB-BE Series Interactive Whiteboard



ZKDigimax's 4K digital interactive whiteboard is designed to foster knowledge sharing in educational settings. The ZKD-IWBE series provides an all-in-one solution with features like screen sharing, interactive whiteboard capabilities, and remote video conferencing, making classroom collaboration more dynamic and engaging for both teachers and students.

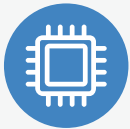
Key Features



4K UHD Display
3840X2160pixels



Ram / Rom
4GB / 32GB



CPU
Quad Core - ARM Cortex - A55



Operating System
Android 13
Windows 11.0 (Optional)

Specifications

General

Model	Name	ZK-IWB65BE	ZK-IWB75BE	ZK-IWB86BE
LCD Screen	Size	65-inch	75-inch	86-inch
Screen Type	Backlight	D-LED	D-LED	D-LED
Display Parameters	Resolution	3840 × 2160		
	Brightness	(pixels) 400cd/m ²		
	Contrast Ratio	(typ.) 1200:1 (typ.)		
	Response Time	6ms (typ.)	8ms (typ.)	8ms (typ.)
	Frequency	60Hz		
	Aspect Ratio	16:9		
	View Angle	178°(H) / 178°(V)		
	Display Colors	1.07B(8bit+FRC)		
Bonding Technology	The gap between tempered glass and screen is close to 0			
Power Parameters	Power Consumption	220W	300W	380W
	Working Voltage	AC 176V to 264V,		
	Power Type	50/60Hz AC Power <0.5W		
	Standby Consumption	<0.5W		
Touch Parameters	Touch Technology	Advanced infrared Touch Technology		
	Anti-Glare	High transparent+ Smooth+Anti-glare		
	Tempered Glass	Toughened Glass 3.2mm Grade:MoHS 7		
	Touch Points	Android:20 Multi-touch points Windows:40 Multi-touch points		
	Input	Stylus/Finger/Other solid(soft tip) object		
	Accuracy	±1mm(middle Over 90% area)		
	Writing Height	3.0mm		
	Resolution	32768×32768		
	Response Time	<5ms		
	Minimum Touch Object	Single touch: ≥1.6mm Multiple touch: ≥2.0mm		
	Support Pen Protocol	Windows Whiteboard 2.0 support thick and thin pens Automatic identification		
	Recognition Level of Thick and Thin Pens	4 Grades :3mm/8mm/ 12mm fine eraser /25mm eraser		
Connectivity	Front Port	USB 3.0*2, Type-C*1, Touch-USB*1, HDMI2.0*1		
	Bottom Port	LAN IN/OUT*2, RS232 IN*1, MIC IN*1, AUDIO OUT*1, SPDIF OUT*1		
	Side Port	Touch-USB*2, HDMI IN*2, USB 2.0*1, USB 3.0*1		
Mainboard	Solution	T982		
	OS	Android 13.0		
	CPU	Architecture: Quad core ARM Cortex A55 Operating frequency < 1.8GHz		
	GPU	MaliG52 2EE MC1@550MHz		
	RAM	4GB		
	ROM	32GB		
	OPS System (Optional)	Windows11.0		
Wi-Fi Module	Main Chipset	Wi-Fi+BT MT7663BU (IEEE 802.11a/b/g/n/ac) Bluetooth v5.1 2T2R 2.4GHz/5GHz		
	Operating Frequency	2.4GHz/5GHz		
	Wi-Fi Standard	IEEE 802.11 ax/b/g/n/ac		
	Bluetooth	2.1+EDR/4.2/5.1		

Specifications

Interactive Whiteboard - BE Series

General

Speaker	Output Power	8Ω /16W×2: 200Hz - 20kHz		
Physical Parameters	Product Dimensions (L*W*H)	1482.1×87.7×897.4 (mm)	1716.5×87.7×1031.8 (mm)	1967.8 x87.7.x1169.9 (mm)
	Package Dimensions (L*W*H)	1640×185×1010 (mm)	1860×185×1125 (mm)	2095×185×1265 (mm)
	Net Weight (kg)	38±1.5 kg	52.5±1.5kg	65.5±1.5kg
	Weight with Packaging (kg)	46±1.5 kg	61.5±1.5kg	77±1.5kg
	Case Material	Aluminium Alloy and Sheet Metal		
	Color	Black		
General Environment	Operating Temperature	0°C to 40°C		
	Storage Temperature	10°C to 60°C		
	Operating Humidity	20% to 80% RH (Non-condensing)		
	Storage Humidity	10% to 60% RH (Non-condensing)		

Application Scenarios



Training room



Meeting room



Class Room